



Improving Cardiology Care for Your Patients and Your Practice.

ACUSON S2000 Cardiovascular Ultrasound System

Answers for life.

SIEMENS



Innovative Cardiology Applications Help You Deliver Quick, Accurate and Complete Diagnoses.

As a cardiologist, you invest in technology that quickly gives you accurate and complete details required to diagnose and care for your patients. The premium-performance ACUSON S2000™ Cardiovascular (CV) Ultrasound System is equipped with everything you need to confidently diagnose even the toughest cardiology cases and to run your practice with ultimate ease and efficiency.

Built on next-generation acoustic and innovative applications, the ACUSON S2000 CV system supports a broad bandwidth of imaging frequencies, providing never-before-seen detail and full cardiovascular functionality in adult, pediatric, vascular and operating room environments. Further, the system's open architecture and transducer compatibility across multiple Siemens ACUSON ultrasound platforms provide extraordinary value and investment protection.





Whether you are imaging a potential neonatal congenital abnormality, assessing ventricular function in a technically challenging patient, determining vascular age from the carotid arteries or evaluating the success of mitral valve repair in an operating room, the ACUSON S2000 CV system delivers unprecedented performance and flexibility. The system enables you to go beyond conventional modes to support a broad range of today's most cutting-edge clinical applications, including:

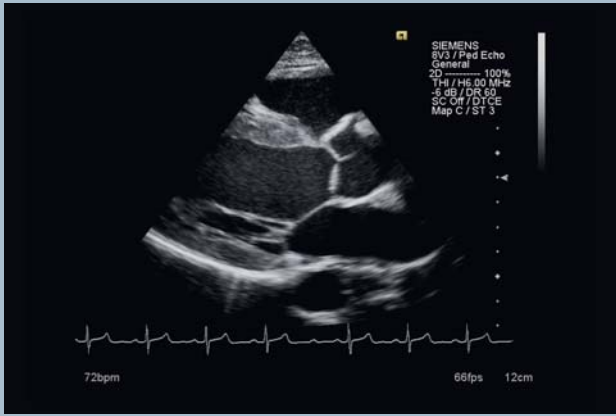
- **TEQ™ ultrasound technology** provides 2D and spectral Doppler optimization at the push of a button improving the consistency and quality of diagnostic exams.
- **eSieScan™ workflow protocols** significantly reduce exam time and system interaction for increased patient throughput and fewer repetitive stress injuries.
- **syngo® Velocity Vector Imaging™ technology (VVI)** assesses global and regional myocardial muscle and motion mechanics for echocardiography. Visual and quantitative data output includes rotation, velocity, strain, strain rate, ejection fraction and volume.
- **syngo® Auto Left Heart** automatically detects left ventricular and atrial borders on typical adult transthoracic images, generating ejection fractions and volumes with no user interaction.
- **Dynamic TCE™ tissue contrast enhancement technology** is a real-time speckle reduction technique that enhances contrast resolution, border detection and image presentation.
- **syngo® Arterial Health Package** measures carotid intima-media thickness (CIMT) and compares the results with normative tables that have been validated and published in peer-reviewed studies to help physicians assess and communicate patients' relative vascular age.
- **Clarify™ vascular enhancement technology** uniquely utilizes power Doppler flow information to enhance tissue characterization, contrast resolution and improve boundary detection.

Unparalleled Image Quality Takes Diagnoses to the Next Level.

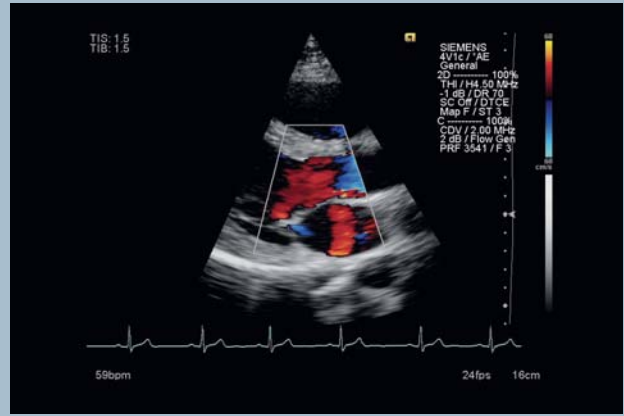
The more detailed view you have of your patient's cardiac function and vascular system, the better equipped you are to make a complete and thorough diagnosis. The ACUSON S2000 CV system brings insight into cardiac performance and vascular function. The system is built on our most advanced, industry leading acoustic technologies including our proprietary micro-pinless (MP) transducer connector technology. It provides superb 2D, color and spectral Doppler imaging for the most demanding cardiovascular applications. You'll have immediate access to extraordinary detail during examinations with advanced imaging technologies, such as:

- **Hanafy lens transducer technology**, a Siemens exclusive, provides a very broad range of frequencies allowing you to scan a variety of body types—from technically difficult patients to elderly patients with a single transducer.
- **MultiHertz™ multiple frequency imaging** delivers penetration as deep as 30 cm without the need for excessive transducer pressure.
- **Multi-D™ matrix transducer technology**, designed for vascular imaging, provides improved 2D, color and spectral Doppler and image uniformity throughout the field of view.
- **Transducer migration protection** significantly improves performance, image quality and resolution of existing ACUSON transducers by enabling migration to the more powerful ACUSON S2000 CV system engine.





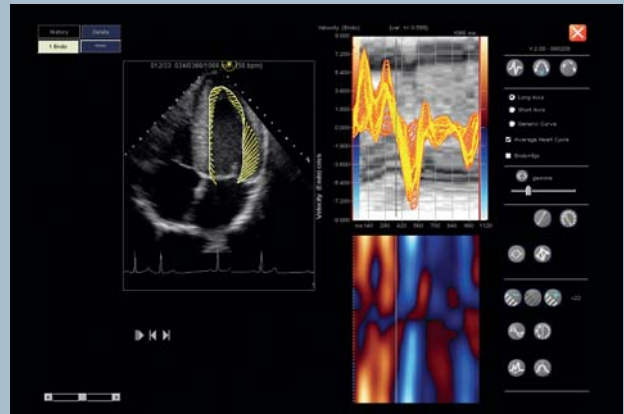
Excellent detail resolution demonstrated with the 8V3 transducer.



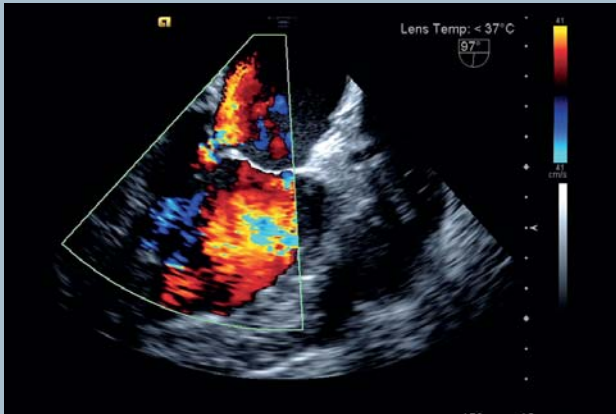
4V1c transducer provides superb color Doppler sensitivity and spatial resolution.



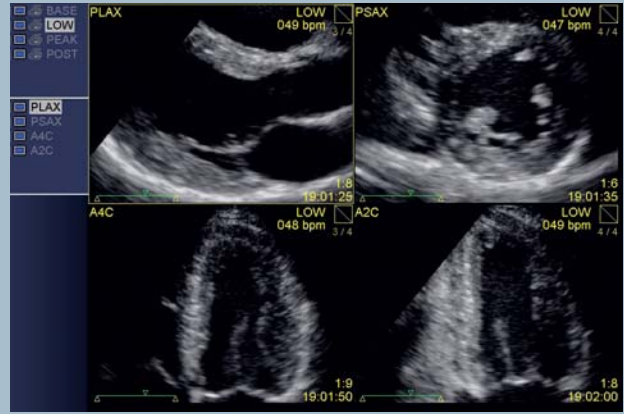
syngo Auto Left Heart provides a new level of efficiency and consistency.



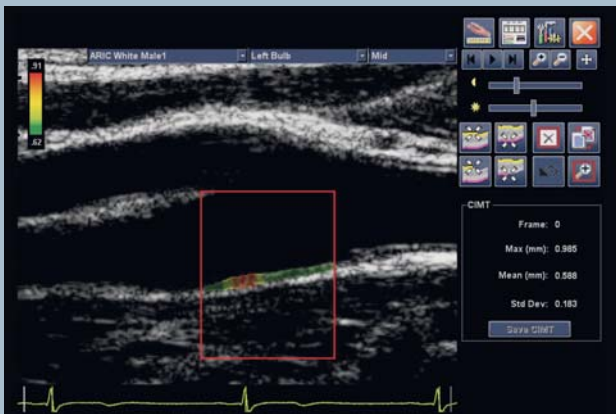
syngo VVI technology displays myocardial motion and mechanics.



Excellent color Doppler spatial resolution utilizing the V5Ms transducer.



Customizable Stress Echo package offers versatility and flexibility.



syngo AHP provides a window to your patient's vascular health.



Dual image of the abdominal aorta demonstrating power Doppler and Clarify VE technology.



Workflow Innovations Free You to Focus on What Matters Most—Your Patients.

Siemens has pioneered a range of knowledge-based workflow innovations that improve the performance and consistency of exams, delivering streamlined echocardiography workflow and greater efficiency to your practice. From image acquisition to review, the system offers individually customizable protocols for maximum workflow flexibility streamlining your labs' throughput. These innovations help reduce exam time and system interaction and provide more productive, consistent and predictable exam content. This means you can focus on your patient's specific cardiology and vascular needs.

- **eSieScan workflow protocols** anticipate and execute your exam based on customizable programs to dramatically reduce keystrokes, thus enabling shorter exam times, increased productivity and improved consistency among multiple operators.
- **syngo Auto Left Heart technology** utilizes pattern recognition to generate volume and ejection fraction calculations. Starting from a comprehensive database of typical adult transthoracic exams, *syngo* Auto LH reduces observer variability and yields a more consistent and standardized measurement.
- **syngo Velocity Vector Imaging technology** leverages a complex algorithm to consider a variety of variables. Quantifying global and regional myocardial muscle and motion mechanics, *syngo* VVI provides insight into cardiac dyssynchrony and myocardial quantification.
- **syngo Arterial Health Package** automates the measurements of the carotid intima-media thickness utilizing a multifaceted algorithm to determine vascular age. *syngo* AHP aids in the identification of preclinical diseases to improve care tailored to the patient's specific needs.

A Powerful Platform that Works with You, Works for You.

The ACUSON S2000 CV system is designed to focus on how clinicians work and interact with patients. Our innovative Home Base control panel design facilitates intuitive, motor-memory learning. As a result, you can easily control the system without taking your focus or attention away from your patient. Supporting today's most comprehensive ergonomic standards, the ACUSON S2000 CV system can be easily adjusted for simple, stress-free operation by virtually any clinician.

- **Natural and extended reach zones** put the most frequently used controls at your fingertips and enable quick access to peripheral devices, recordable media and transducer connectors.
- **Center Home Base control panel** facilitates motor memory learning for either right or left handed scanners.
- **A flexible articulating arm and high-resolution, 19-inch flat panel display** ensure optimal monitor placement and enhanced image quality in all lighting situations.
- **4V1c single solution phased array transducer** for superior penetration and resolution enables scanning of even of the most technically difficult-to-image patients.

Service at Your Fingertips.

Life is the unique customer care solution from Siemens that helps you get the most from your investment. From the moment of your purchase, Life surrounds you with an array of programs and support that enables the continuous development of your skills, productivity and technology. Allowing you to broaden your capabilities. Increase profitability. And take patient care to the next level.

Grows with You and Your Practice.

As part of the ACUSON family of products, the ACUSON S2000 CV Ultrasound System is designed with the future in mind. Existing ACUSON transducers can be seamlessly migrated to the new platform. The latest imaging technologies can be added as upgrades to the system after installation, including hardware, software, transducers and peripheral devices, allowing the system to grow as the clinical needs of your practice expand. Options and upgrades protect your original investment and keep you competitive in your marketplace.

Standalone clinical images may have been cropped to better visualize pathology.

ACUSON, eSieCalcs, eSieScan, eSie Touch, Multi-D, MultiHertz, S2000, SieClear, TCE, TEQ and Velocity Vector Imaging are trademarks of Siemens Medical Solutions USA, Inc. and syngo is a trademark of Siemens AG.

Local Contact Information

Siemens Medical Solutions USA, Inc.
51 Valley Stream Parkway
Malvern, PA 19355-1406 USA
Phone: +1-888-826-9702
www.usa.siemens.com/healthcare

Europe: +49 9131 84-0
Asia Pacific: +65 6490 6000

Global Business Unit

Siemens Medical Solutions USA, Inc.
Ultrasound
1230 Shorebird Way
Mountain View, CA 94043 USA
Phone: +1-888-826-9702
www.siemens.com/healthcare

Global Siemens Headquarters

Siemens AG
Wittelsbacherplatz 2
80333 Muenchen
Germany

Global Siemens Healthcare Headquarters

Siemens AG
Healthcare Sector
Henkestrasse 127
91052 Erlangen
Germany
Phone: +49 9131 84-0
www.siemens.com/healthcare

Legal Manufacturer

Siemens Medical Solutions USA, Inc.
Ultrasound
1230 Shorebird Way
Mountain View, CA 94043 USA
Phone: +1-888-826-9702
www.siemens.com/healthcare